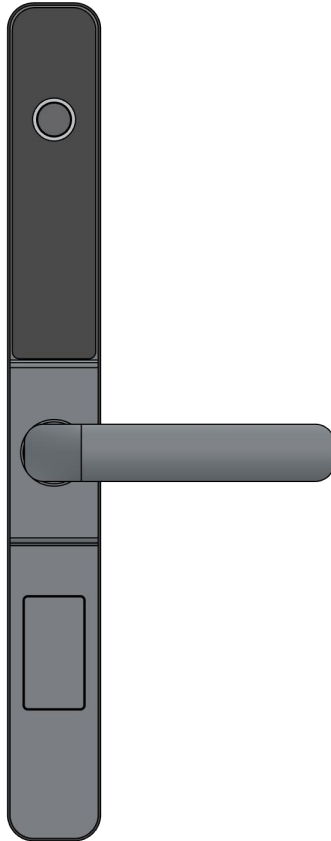



# User Manual v1.5



 Mechanical keys are used as an emergency unlocking method and should not be kept indoors!

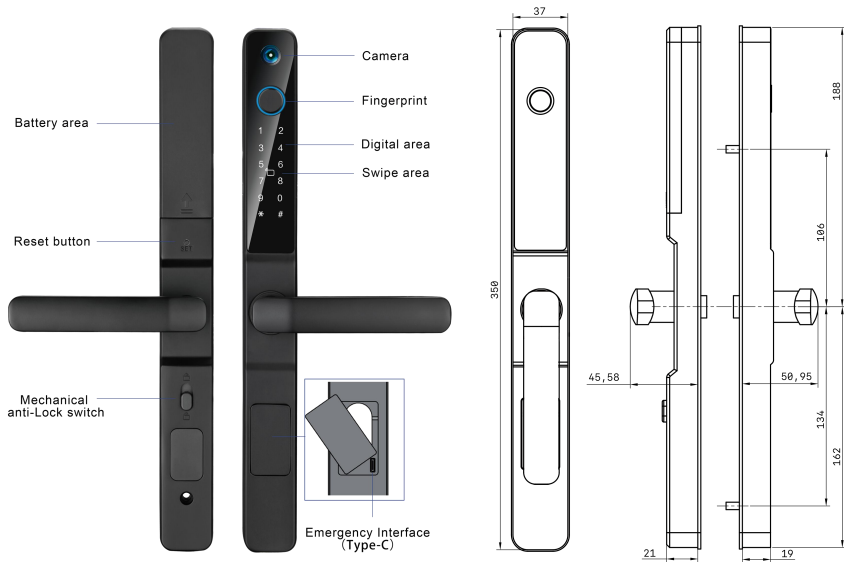


# CONTENTS

<b>1. Product Size.....</b>	<b>2</b>
<b>2. Parameter Table.....</b>	<b>2</b>
<b>3. Product List.....</b>	<b>2</b>
<b>4. Product Installation.....</b>	<b>3</b>
4.1 Mortise Adjustment.....	3
4.2 Cutting.....	3
4.3 Install mortise and buckle.....	3
4.4 Handle Adjustment.....	4
4.5 Install door lock.....	4
4.6 Functional test.....	5
<b>5. System Settings.....</b>	<b>5</b>
<b>6. TuyaSmart App Settings.....</b>	<b>6</b>
6.1 Download APP.....	6
6.2 Add device.....	6
6.3 Remote Unlock.....	7
6.4 Add User.....	7
6.5 Tuya Function List.....	7
<b>7. Other Function Description.....</b>	<b>8</b>
<b>8. Initialize the system.....</b>	<b>8</b>
<b>9. Language switch.....</b>	<b>8</b>

## 1.Product Size

Unit:mm



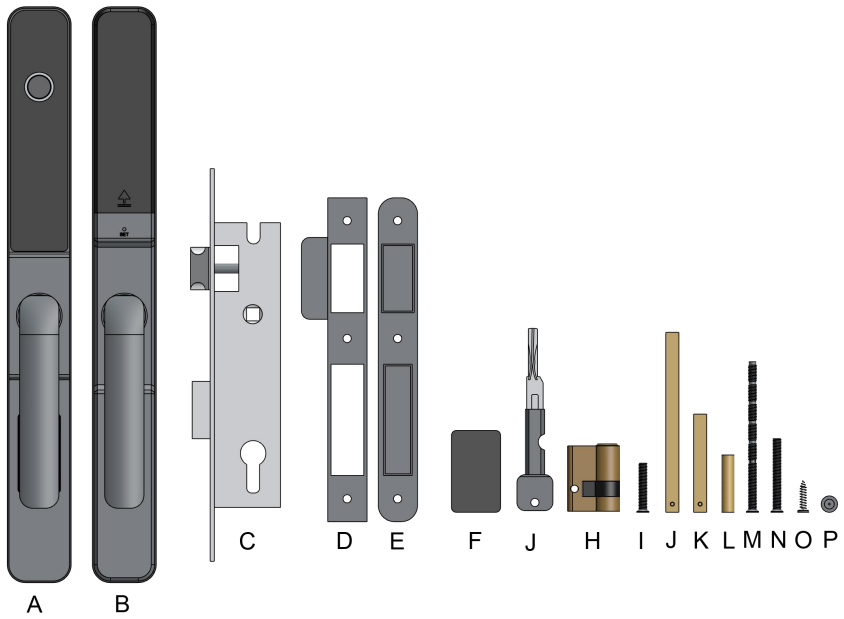
\*If there is an error in manual measurement, the actual object shall prevail.

## 2.Parameter Table

Material	Aluminum alloy	Color	Black,Silver
Information capacity	300pcs ( Admin : 9pcs )	Fingerprint	semiconductor
Fingerprint head type	100pcs	Response speed	<1S
Card type	M1、IC	Static power	≤80μA
Power supply	4 AA batteries	Operating temperature	-20℃ ~ 60℃
Emergency interface	Type-C	product weight	2KG
Mortise	2885 22x240mm	Applicable door thickness	40 ~ 90mm
Unlocking method	Fingerprint, password, card, mechanical key, APP remote (optional)		

## 3.Product List

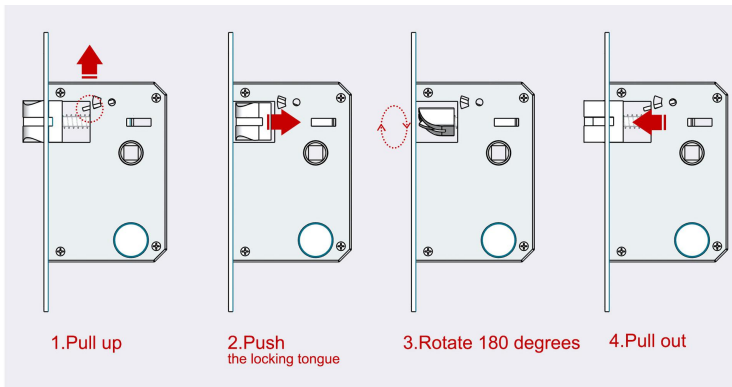
A	Front panel x1	I	Screw M5x30mm x1
B	Rear panel x1	J	Shaft M8x8x110mm x1
C	Mortise x1	K	Shaft M8x8x60mm x1
D	Buckle x1	L	Connection tube M8x30mm x2
E	Buckle case x1	M	Screw M5x85mm x2
F	Card x2	N	Screw M5x45mm x2
J	Key x2	O	Screw M4x20mm x5
H	Cylinder x1	P	Plastic plug x1



## 4. Product Installation

### 4.1 Mortise Adjustment

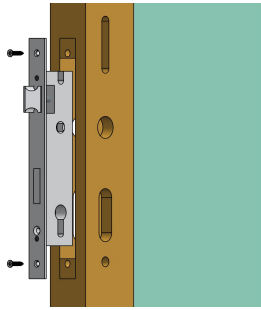
Adjust the oblique tongue direction of the mortise according to the actual door opening direction (inward or outward). Pull out the lock block as shown in the figure ①; ② Push the inclined tongue into the shell; ③ Rotate the oblique tongue 180 degrees; ④ Release and pull out the diagonal tongue. Complete the commutation.



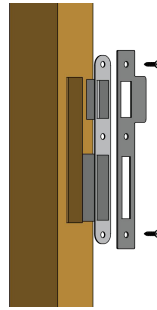
### 4.2 Cutting

Cut holes according to Cutting Template 1:1

### 4.3 Install mortise and buckle

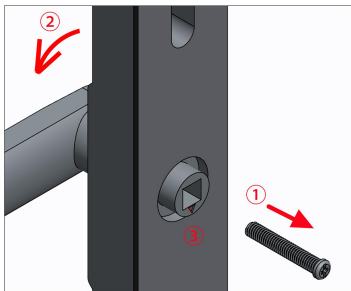


Cut holes according to the cut-out diagram and install the mortise.

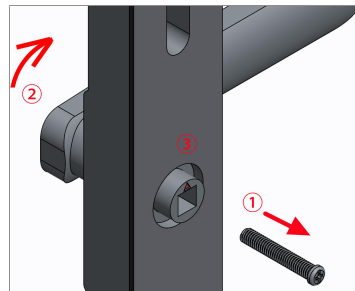


Install the buckle

#### 4.4 Handle Adjustment



Right



Left

##### Door opens right

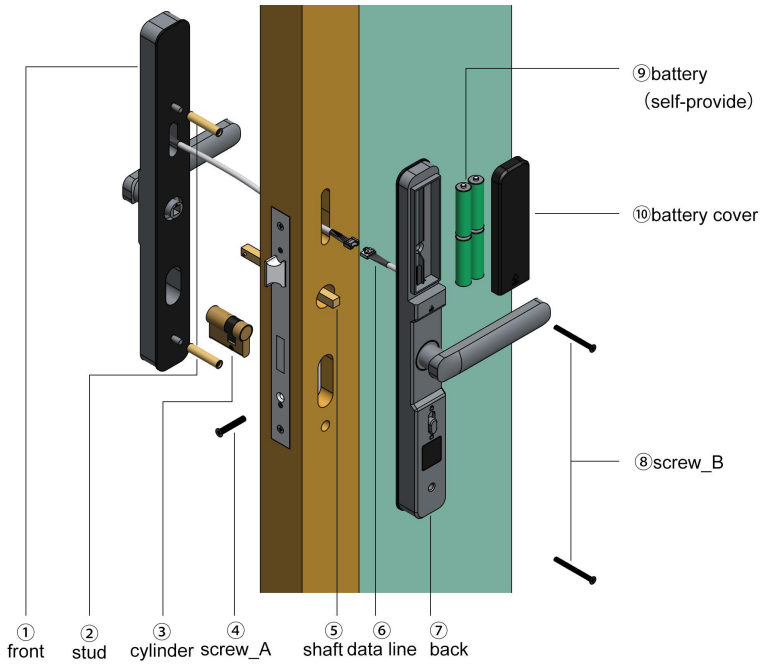
①Remove the screws; ②Rotate the handle ( picture above ) ; ③Triangle sign down; Install the screws.

##### Door left open

①Remove the screws; ②Rotate the handle ( picture above ) ; ③Triangle sign up; Install the screws.

#### 4.5 Install door lock

- (1) Take out the cylinder③ add screw\_A④,install onto mortise.
- (2) Take out the Install front panel ① ,first install two stud\_A ② on the bottom plate of the front panel.
- (3) Pass the data line⑥ on the front panel through the door hole, and then install the shaft⑤. The shaft will be cut to the appropriate length according to the thickness of the door to ensure that the handle can be linked.  
Reference suggestion: **shaft length=door thickness+20mm**
- (4) Install the back panel ⑦, first connect the data line⑥ with the back panel wiring terminal, insert the shaft ⑤ into the handle hole of the front panel, and take out the screws\_B⑧ to fix them with the front panel studs ②.
- (5) Adjust the position of the front and front panels to ensure smooth lifting and pressing of the handle.
- (6) Install the 4AA battery⑨, cover the battery cover⑩, and complete the installation.
- (7) Functional testing.



**4.6 Functional test**

Using the front door lock test

**Front panel:** Lift up the handle to lock it, press down the handle to release it, use fingerprint, password (123456 #), or card to unlock it in any way, press down the handle to unlock it, and the test is normal.

**Back panel:** Lift the handle up to unlock, press the handle down to unlock, and the test is normal.

**5. System Settings**

Press \* # to enter the system, with an initial password of 123456 #.

There are four main menus: 1. Administrator settings; 2. User settings; 3. System settings; 4. Restore the initial factory settings. Press the voice navigation to select the menu for settings, return with the "\*" key, and confirm with the "#" key.

<b>1.Administrator settings</b>	1.Add admin	<b>Please enter administrator information</b> Fingerprint: Place your finger on the head of the fingerprint. Repeat 4 times Password: 4-8 digits, repeated twice Card: Place the card in the swipe area once Administrator information: 9 groups (numbers: 001-009)
	2.Delete admin	<b>Please enter the deleted administrator number (001-009)</b> Number 001 cannot be deleted
	3.Network settings	Null
<b>2. User settings</b>	1.Add user	<b>Please enter user information</b> Fingerprint: Place your finger on the head of the fingerprint. Repeat 4 times Password: 4-8 digits, repeated twice Card: Place the card in the swipe area once User information: 200 groups (numbers: 010-299)
	2.Delete user	1. Number deletion: User number (010-299) 2. Delete All
<b>3. System settings</b>	1.Voice settings	1. Turn on voice 2. Turn off voice: Only turn off the switch lock prompt voice
	2.Unlock mode	1. Single unlocking 2. Combination unlocking: fingerprint, password, card, and two types of information can be entered simultaneously to unlock, and the admin is not restricted

<b>4. Restore the initial factory</b>	Press '#' to confirm	Initialized successfully
---------------------------------------	----------------------	--------------------------

## 6.TuyaSmart App Settings

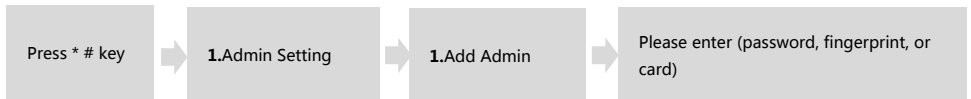
### 6.1Download APP

Search for "tuya smart" in the App Store of the IOS system or the App Market of the Android system, or directly scan the doodle QR code on the right to download, and register as an APP user using your phone number.

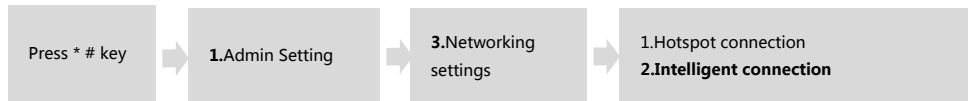


### 6.2 Add device

(1)Add an admin. Press the \* # key on the lock, enter the admin information (initial password is 123456 #), select "1", and add an admin.

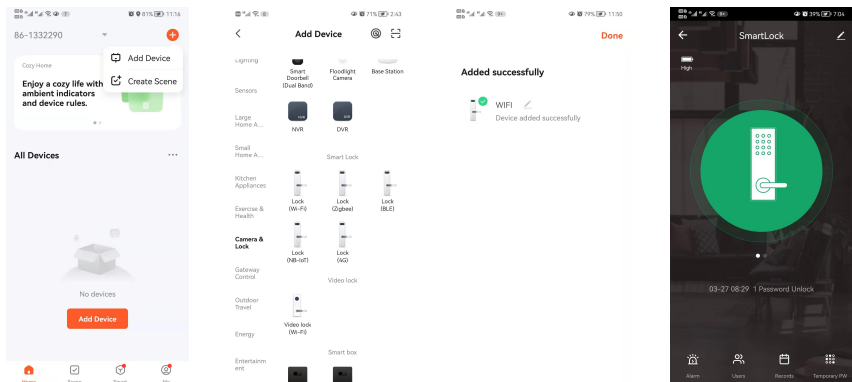


(2)Press \* # again to enter the system, enter the set administrator information "\*\*\*\*\* #", select "1" - "3" networking settings, and next select "2" smart connection. If it is invalid, you can choose "1" hotspot connection. When the number on the lock flashes, it indicates that you are requesting networking, and the next step is to operate the app.



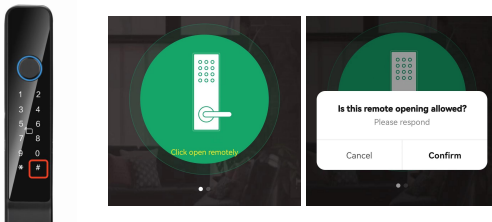
(3)Open Bluetooth and WiFi on your phone and click on the Tuya app, click the "+" sign in the upper right corner, select "Add Device" to enter the Add Device page, click "Add" to enter "Camera/Lock", and select "WiFi Door Lock".

(4)Enter the WiFi settings page, enter the WiFi network account and password that can be connected, and click "Next". Note that WiFi only supports 2.4G and does not support 5G. Wait for the configuration to be completed. You can customize the name and click 'Next' to complete the distribution network.



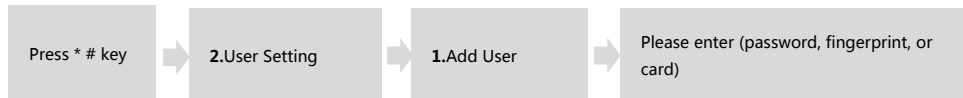
### 6.3 Remote Unlock

Press the lock doorbell "#" to remotely request unlocking. The mobile app will receive the request message, click on the app unlocking icon, and "confirm" or "cancel" unlocking.



### 6.4 Add User

Set user passwords, fingerprints, or IC card information on the lock. User ID: 010-299



After completing the settings, unlock the lock once, and then enter the "Door Opening Log" selection in the graffiti app to view the corresponding number and directly associate the user name. Alternatively, enter "Member Management" to edit the product unlocking information and enter the corresponding number to successfully associate it.

### 6.5 Tuya Function List

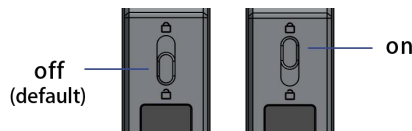
For a detailed explanation of the basic functions of the Tuya app, please refer to the following lists 1~4.

<p><b>1.Member Management</b></p>	<p>Two types of members.          Within the options, member names, associated unlock information, and hijacking information can be edited.  <b>Method of associating unlocking information: Click to edit member information, select the corresponding unlocking information you want to add, and enter the number.</b>          (Admin numbers 001-009, user numbers 010-299)</p>	
<p>Family Member</p>	<p>Family member permissions:          1.The user will enter the homegroup.          2.This user will be able to control and use all products within the home level.</p>	
<p>Other Member</p>	<p>Other member permissions:          1. This user only appears in the member list of the current door lock and only corresponds to the door opening record.          2. Users cannot obtain any device operation and management permissions.          3. To grant user access to the door lock, please use the sharing function.</p>	
<p><b>2.Unlocking Records</b></p>	<p>1.View all door opening records.          2.Associate user information.</p>	

<b>3. Temporary Code</b>	Offline temporary password distribution can be randomly generated. This feature requires the phone time to be consistent with the lock time.
Remote dynamic password	Random 8-digit password, valid for 5 minutes.
Offline temporary password	Random 7-digit password, with a freely adjustable validity period of no more than 5 years.
<b>4. Alarm</b>	This function requires setting hijacking and unlocking information in the "Member Management" to have an alarm prompt.

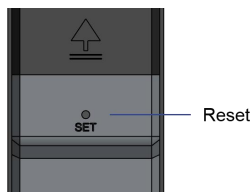
## 7. Other Function Description

- (1) **Password error alarm:** If the incorrect password is entered continuously for more than 5 times, the keyboard will be locked for 90 seconds, and the system will be locked within 90 seconds.
- (2) **Password anti peeping:** When opening the door with a password, add any number before and after the normal password to unlock.
- (3) **System automatic exit:** If the system does not operate for more than 10 seconds, it will automatically exit.
- (4) **Low battery reminder:** If the voltage is lower than 4.8V, the system will automatically alarm and the rear door lock can be unlocked about 200 times. Please replace the battery as soon as possible.
- (5) **Normally open mode:** After unlocking, press "5#" to set the normally open mode; Unlock once using any unlocking method, and cancel the normally open mode.
- (6) **Anti lock function:** The front and rear cannot be unlocked when the anti-lock key is turned on. Turn off the anti-lock, normal use. Please keep the default "off".



## 8. Initialize the system

The back panel, press and hold the "Reset" button for 6 seconds, and press the "#" button to confirm. The initialization is successful.



## 9. Language switch

In the initial state, enter the corresponding language code to switch. If you are not in the initial state, please initialise the system first (refer to step 8).

CODE	LANGUAGE
555666880#	Chinese (default)
555666881#	English
555666882#	Vietnamese
555666883#	Portuguese
555666884#	Arabic
555666885#	Russian
555666886#	Thai
555666887#	Spanish
555666888#	Indonesian