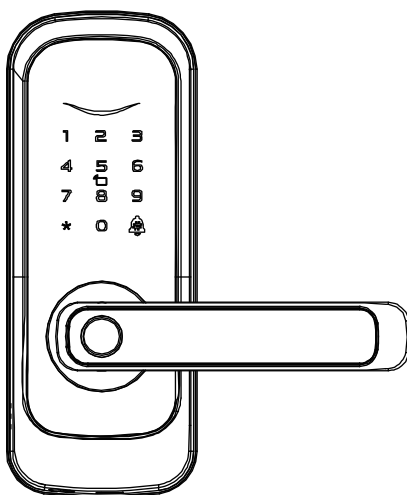


# Installation Manual v1.1



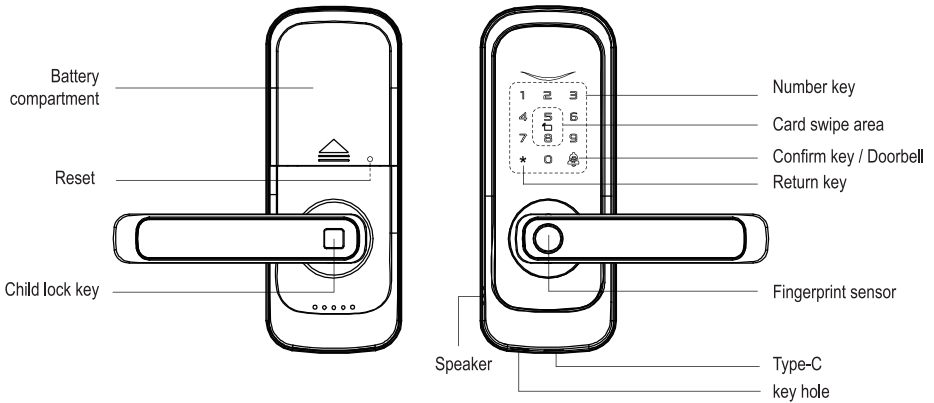
⚠️ The mechanical key for the fingerprint lock is for emergency unlocking.  
Do not keep it indoors!



# CONTENTS

<b>1. Product display</b>	-----	1
<b>2. Product parameters</b>	-----	1
<b>3. Product size</b>	-----	1
<b>4. Product list</b>	-----	2
<b>5. Product install</b>	-----	2
5.1 Installation diagram	-----	2
5.2 Measure dimensions	-----	3
5.3 Door opening direction	-----	3
5.4 Install Latch	-----	4
5.5 Install Lock	-----	5
<b>6. Restore factory</b>	-----	6
<b>7.System Settings</b>	-----	7
7.1 Menu structure diagram	-----	7
7.2 Add admin	-----	7
7.3 Delete admin	-----	7
7.4 User setting	-----	8
7.5 Delete user	-----	8
7.6 Voice settings	-----	8
7.7 Unlock mode	-----	8
7.8 Restoring factory setting	-----	9
<b>8.Tuya Smart App Setting</b>	-----	9
8.1 Download AP	-----	9
8.2 Add device	-----	9
8.3 Remote unlock request	-----	10

## 1.Product display

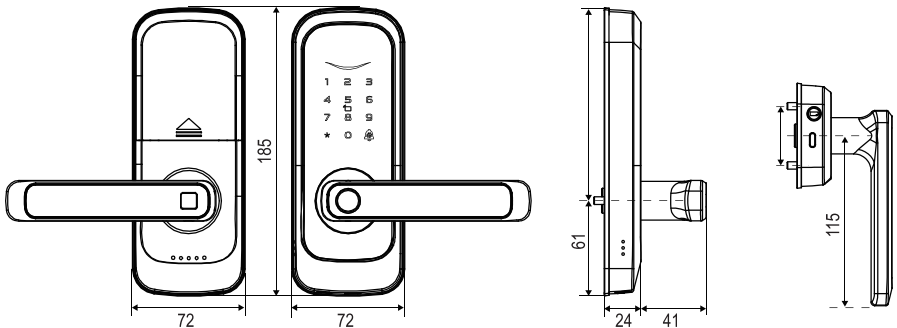


## 2.Product parameters

<b>Material</b>	Aluminum alloy	<b>Color</b>	Black/Silver
<b>Information capacity</b>	300pcs (admin : 9pcs)	<b>Collection type</b>	semiconductor
<b>Fingerprint capacity</b>	100pcs	<b>Reaction speed</b>	<0.5S
<b>Card type</b>	M1、IC 13.56MHz	<b>Standby current</b>	≤65μA
<b>Power</b>	4pcs AA	<b>Op Temp</b>	-20°C~60°C
<b>Emergency interface</b>	Type-C	<b>Weight</b>	1.4KG
<b>Mortise</b>	60/70 latch	<b>Door Thickness Range</b>	35~55mm
<b>Unlock method</b>	Fingerprint,Password,Card,Key,App(optional)		

## 3.Product size

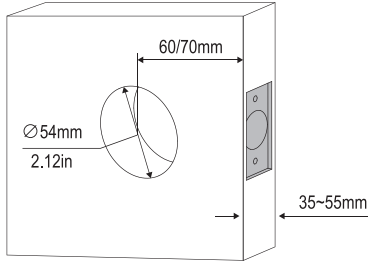
Unit:mm





### 5.2.Measure dimensions

his product is suitable for door thickness 35-55mm, hole diameter 54mm, center distance 60mm or 70mm.

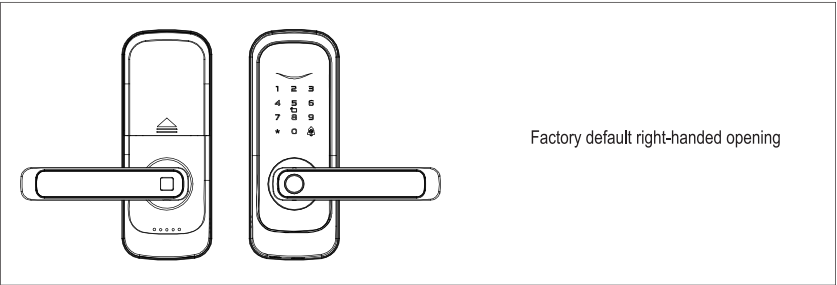
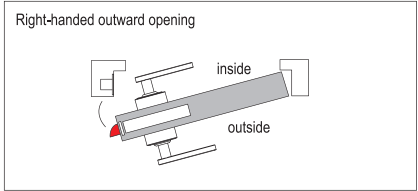
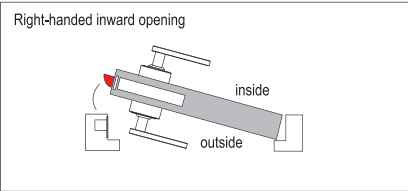


**⚠ Tips:**

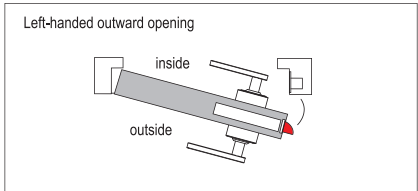
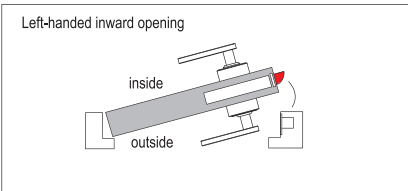
This exceeds the installation range. Please consult the merchant.

### 5.3.Door opening direction

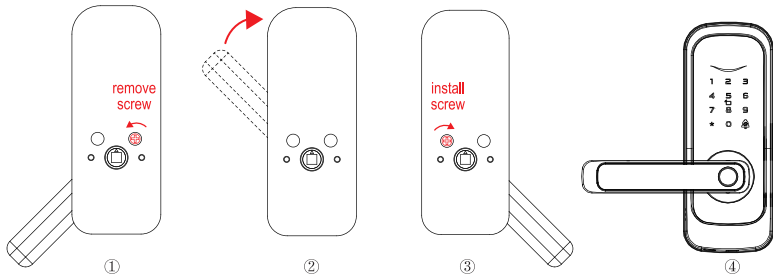
#### Right-handed door



#### Left-handed door

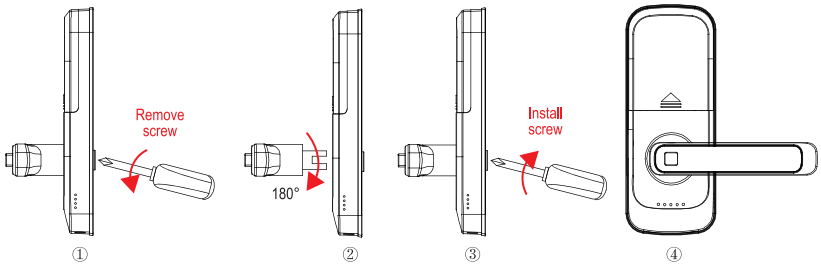


### Change the front handle to left-hand opening



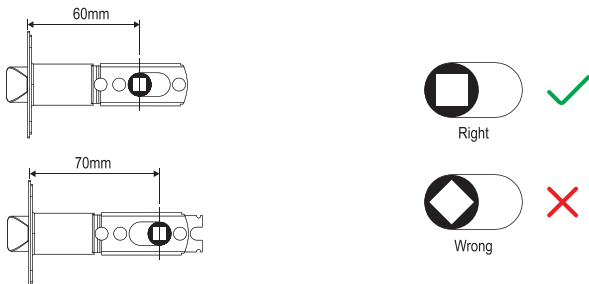
- ① Press the handle down, remove the screw. ② Turn the handle. ③ Press the handle down and install the screw. ④ completed.

### Change the rear handle to left-hand opening

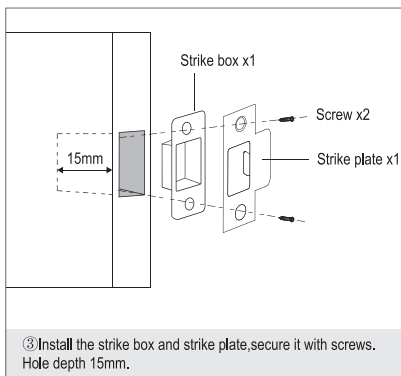
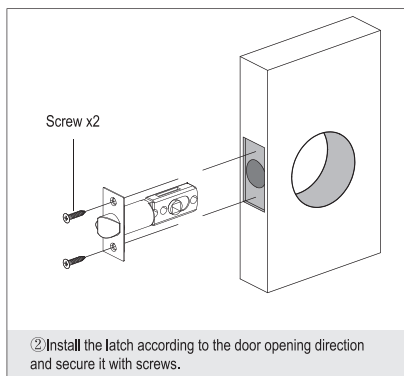


- ① Remove the screw inside the handle. ② Rotate the handle 180 degrees. ③ Install the screw inside the handle. ④ completed.

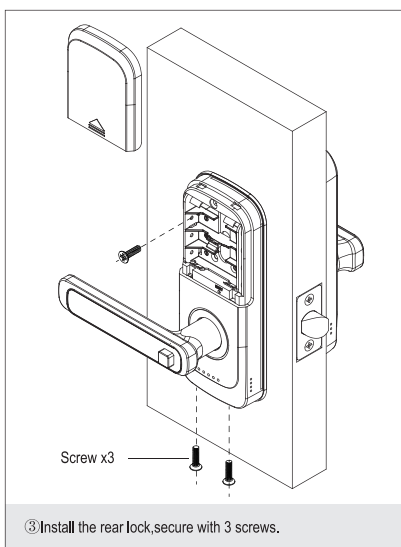
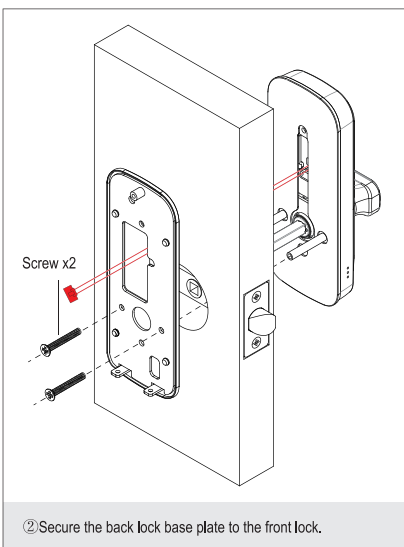
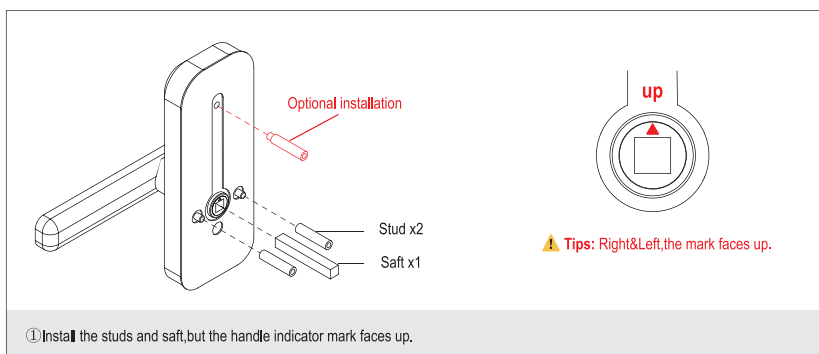
## 5.4. Install Latch

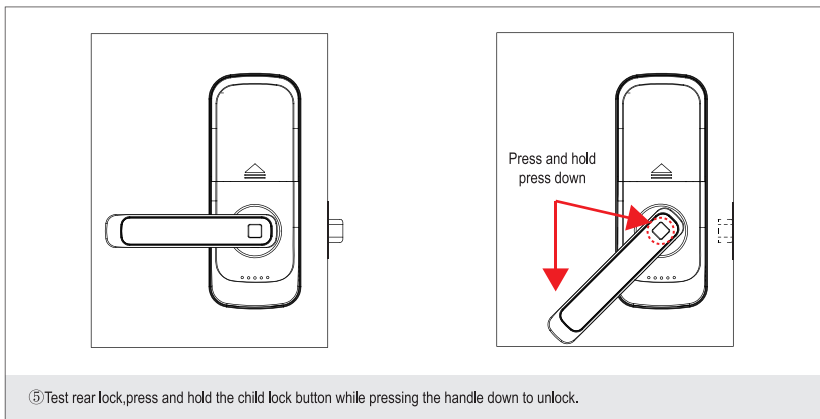
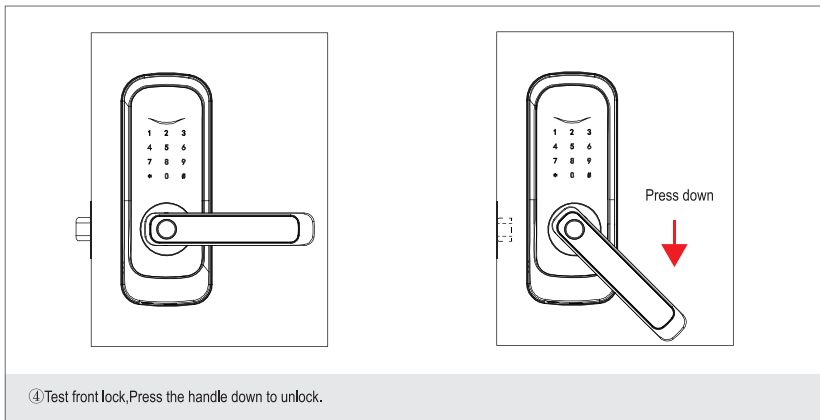


- ① Adjust to 60mm/70mm according to the hole center distance. Keep the square hole level while moving.

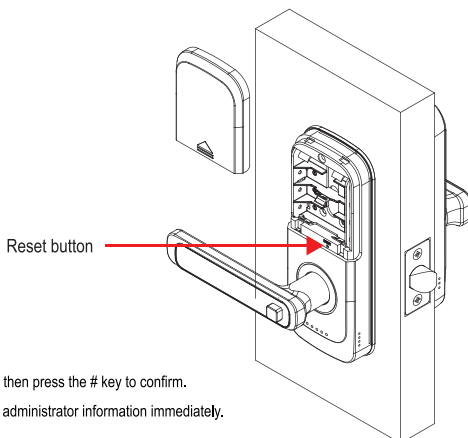


## 5.5. Install Lock





## 6. Restore factory

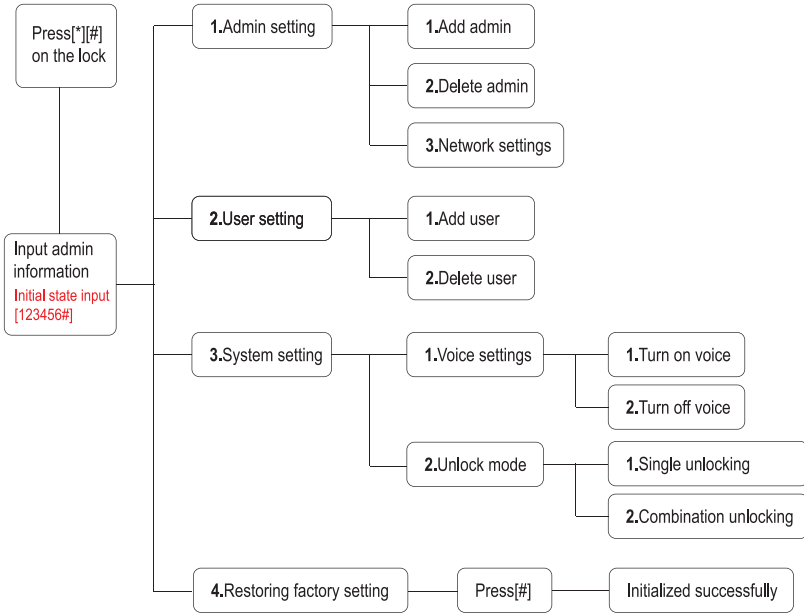


### ⚠ Tips:

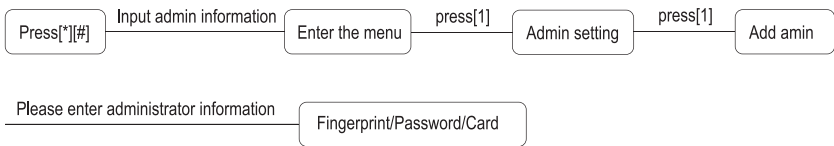
- ① Press and hold the reset button for 5 seconds, then press the # key to confirm.
- ② Resetting will clear all information. Please add administrator information immediately.

# 7.System Settings

## 7.1.Menu structure diagram



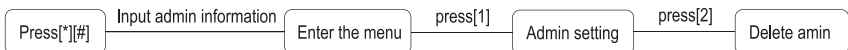
## 7.2.Add admin



### ⚠ Tips:

- ① In the initial state, the administrator password to access the system is [123456#]
- ② The system supports the entry of up to 9 administrator (numbers: 001-009):  
[Fingerprint] Place your finger on the head of the fingerprint. Repeat 5 times.  
[Password] 6-8 digits, repeated twice.  
[Card] Place the card in the swipe area once.

## 7.3.Delete admin



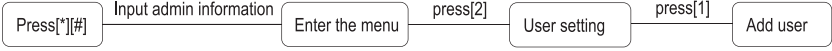
Enter the number and press [#] to confirm

Number: 002 to 009

**⚠ Tips:**

Number 001 cannot be deleted.

### 7.4. User setting



Please enter user information

Fingerprint/Password/Card

**⚠ Tips:**

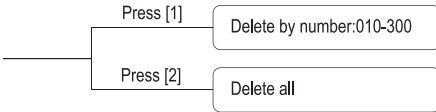
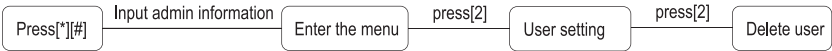
User capacity: 201 groups. Numbers: 010-300

**[Fingerprint]** Place your finger on the head of the fingerprint. Repeat 5 times.

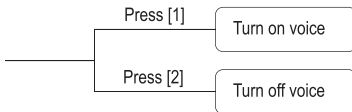
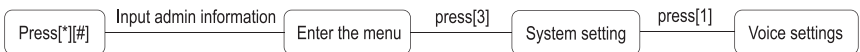
**[Password]** 6-8 digits, repeated twice.

**[Card]** Place the card in the swipe area once.

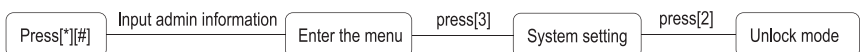
### 7.5. Delete user

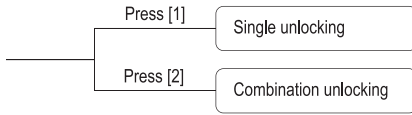


### 7.6. Voice settings



### 7.7. Unlock mode



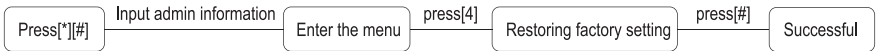


**⚠ Tips:**

**[Single unlocking]** Enter 1 piece of information to unlock.

**[Combination unlocking]** fingerprint, password, card, and two types of information can be entered simultaneously to unlock, and the admin is not restricted.

## 7.8.Restoring factory setting



## 8.Tuya Smart App Setting

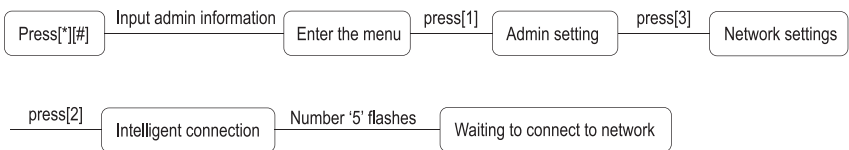
### 8.1.Download APP

Search for "tuya smart" in the App Store of the IOS system or the App Market of the Android system, or directly scan the doodle QR code on the right to download, and register as an APP user using your phone number.



### 8.2.Add device

#### [Turn on wireless pairing]

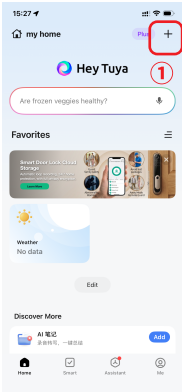


#### [Open the Tuya Smart APP]

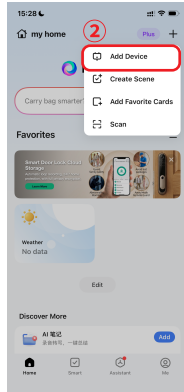
**⚠ Tips:**

Please turn on your phone's 2.4G Wi-Fi and Bluetooth, then start network configuration.

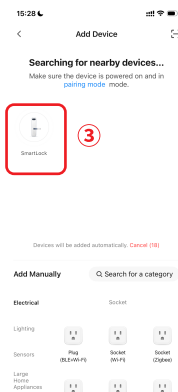
Follow the 7 steps below to complete the connection:



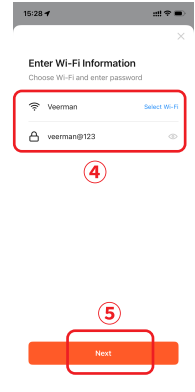
① Tap [+]



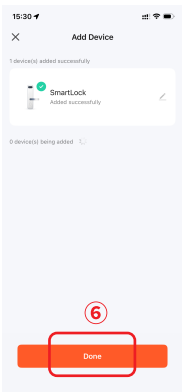
② Tap [Add Device]



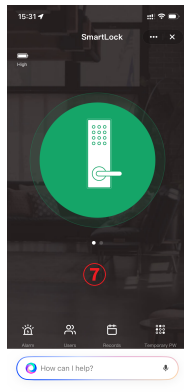
③ Tap the icon [Smart lock]



④ Enter Wi-Fi account and password. ⑤ Tap [Next].

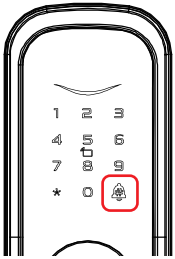


⑥ Tap [Done]

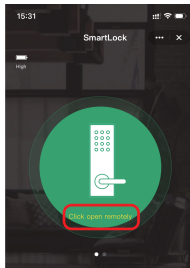


⑦ Finish

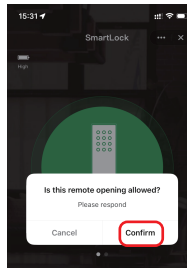
### 8.3.Remote unlock request



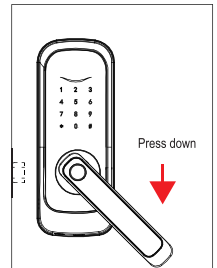
① Press the doorbell to request remote unlock.



② Tap [Click open remotely].



③ Tap [Confirm].



④ Press down the handle to unlock.